

**Junior & Small Level
Girls Uniform with
Pattern**

JUNIOR & SMALL GIRLS BLOUSE



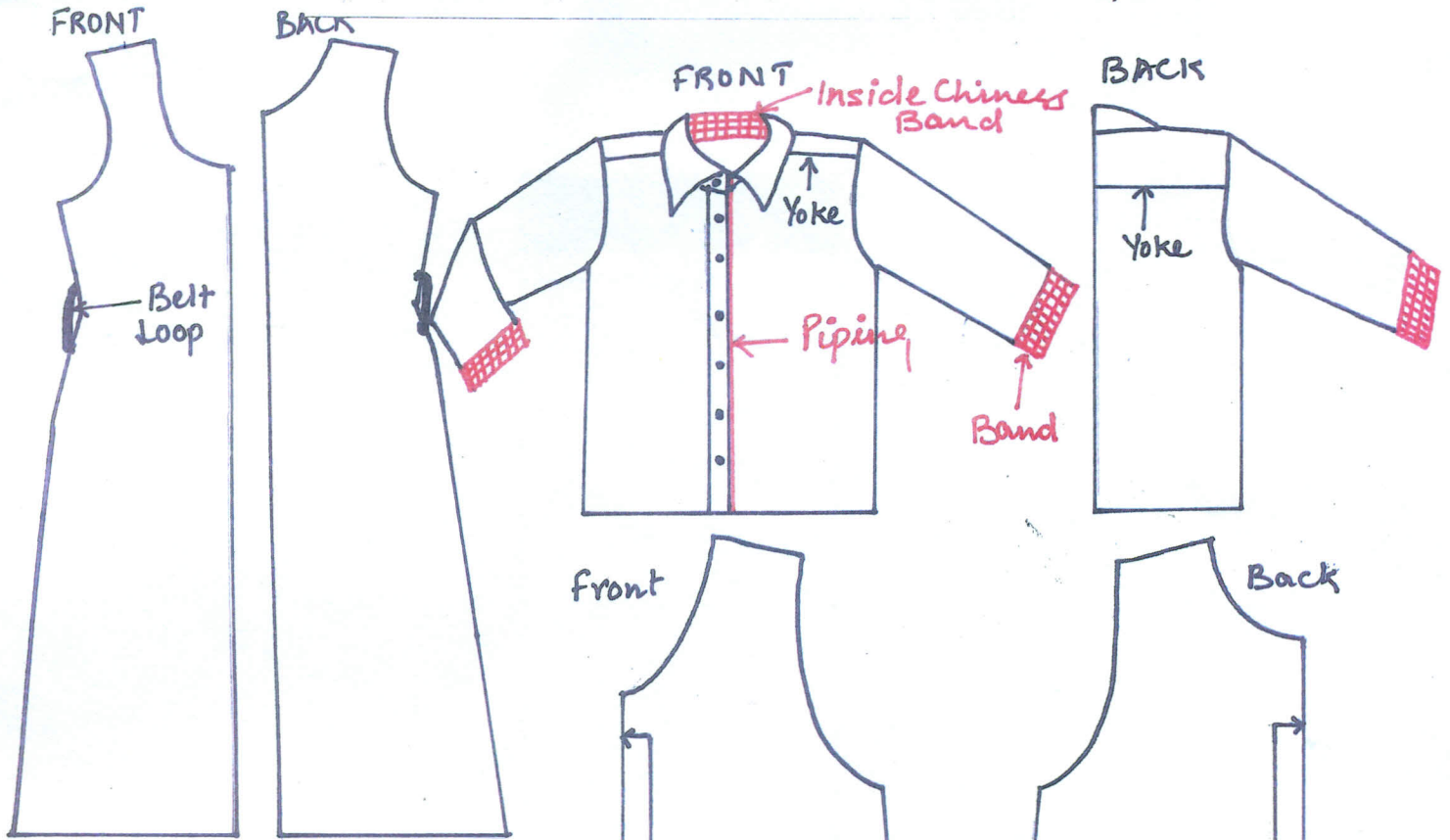
JUNIOR GIRLS TUNIC



SMALL GIRLS SKIRT WITH GALLACE

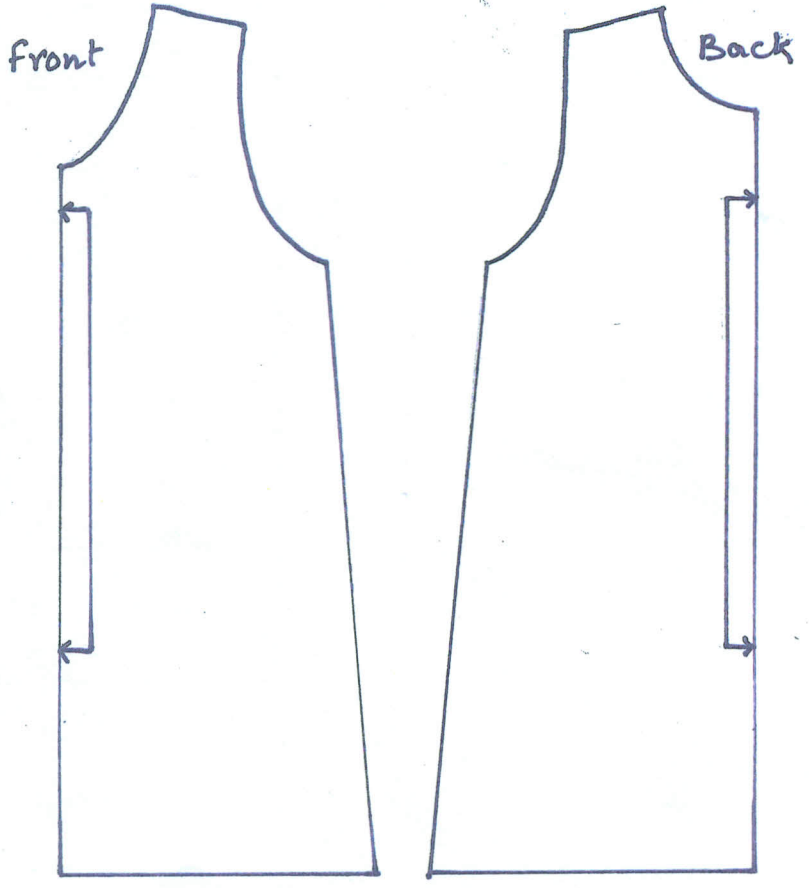


JUNIOR GIRLS TUNIC WITH BLOUSE

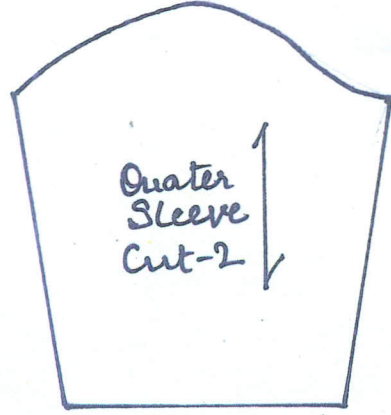
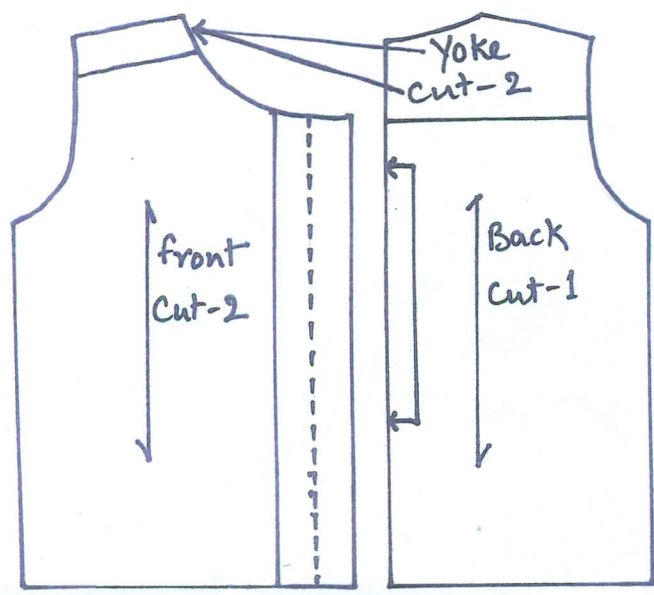


Measurements :

- Tunic Length -
- Shirt length -
- Shoulder -
- Round Bust -
- Round Waist -
- Waist length -
- Sleeve length -
- Round Arms -
- Collar Width -

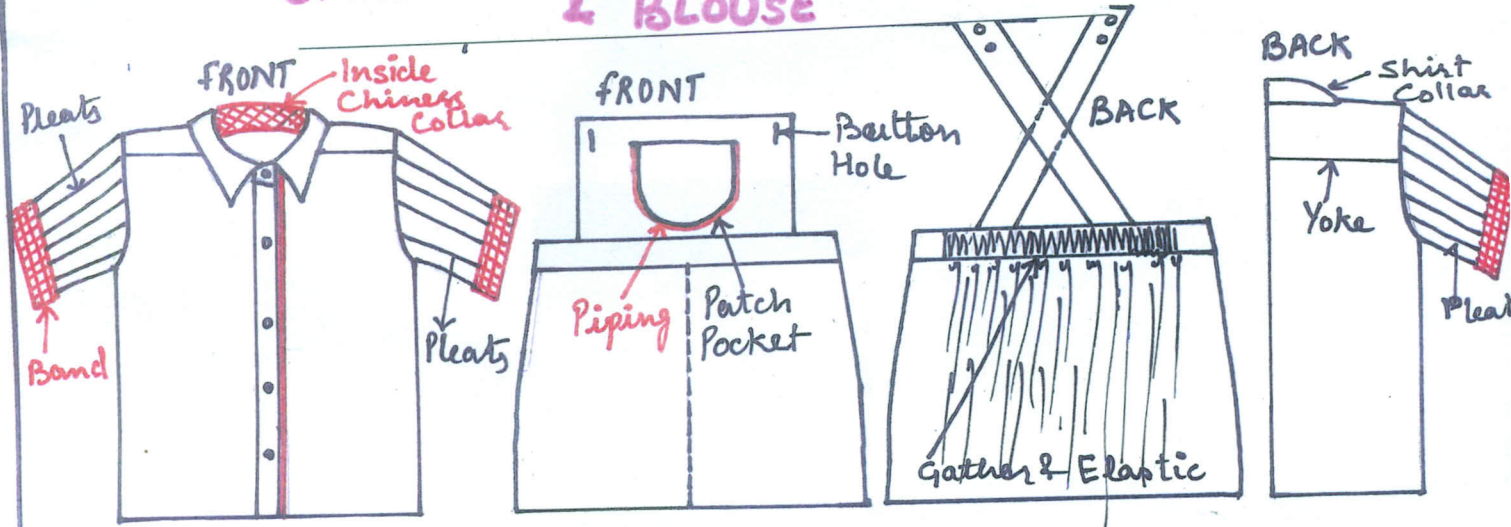


Sleeve Band 1
Cut - 2



Cut - 2
Cut - 2

SMALL GIRLS SKIRT WITH GALLONS & BLOUSE



Measurements:

- Shirt Length - 42cms
- Shoulder - 29cms
- Round Chest - 70cms
- Sleeve Length - 14cms
- Collar Width - 3cms
- Skirt Length - 29cms
- Round Waist - 62cms
- Round Hip - 75cms

